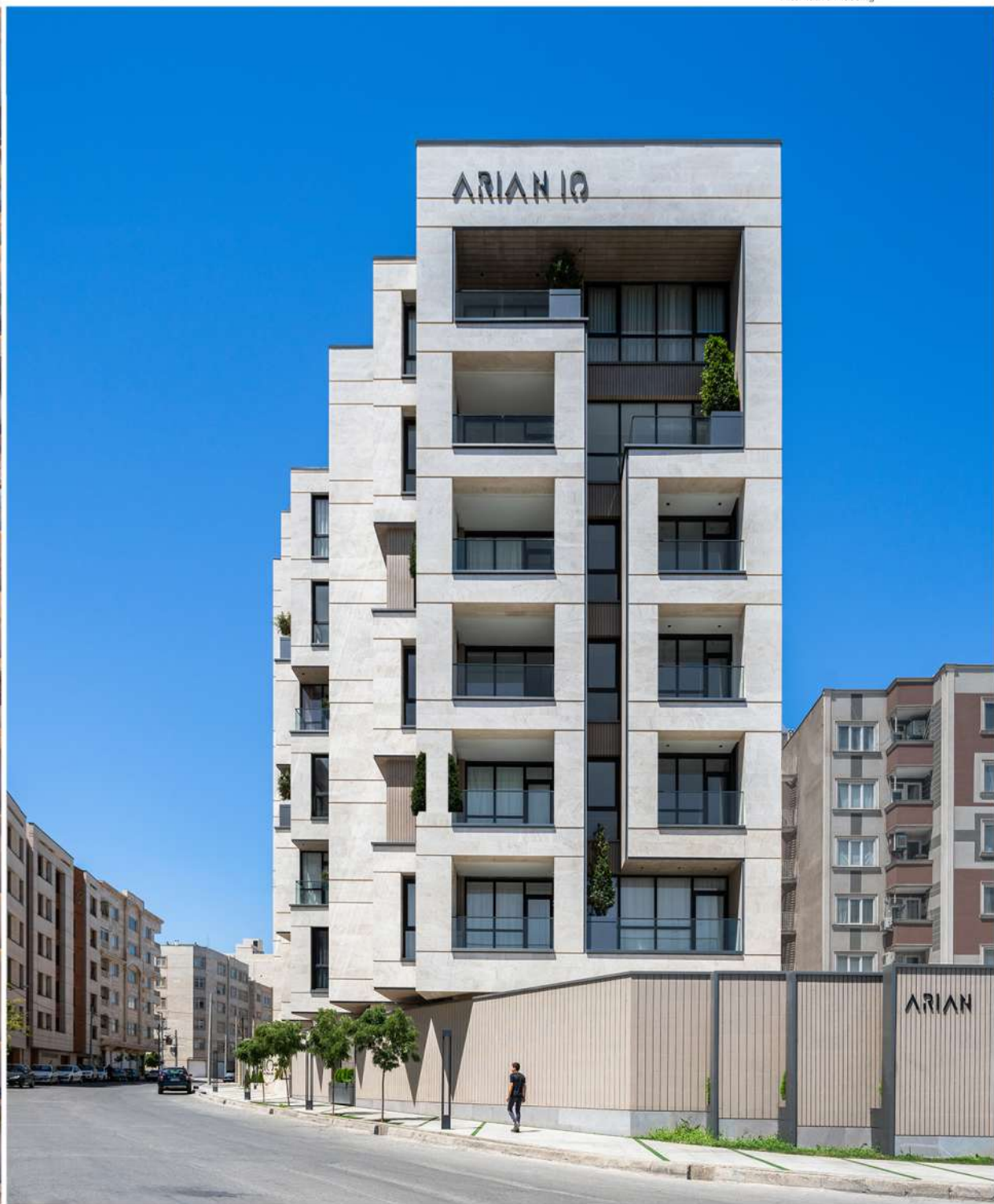
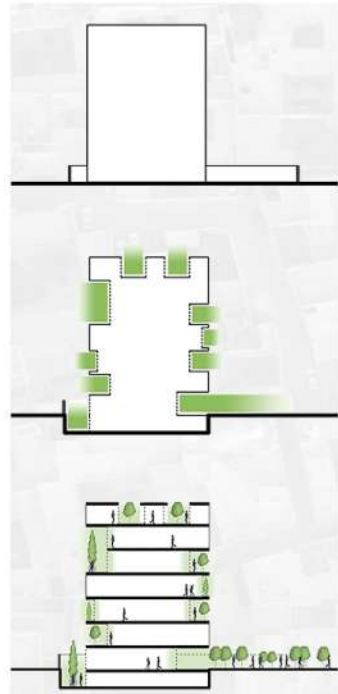
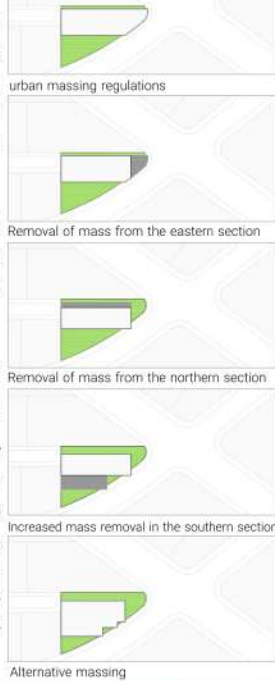


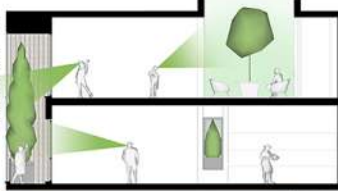
RESIDENTIAL BUILDING NO.10

In the traditional cities of Iran, every house was built around a central courtyard, and as houses were placed next to each other, the city expanded horizontally. Today, as horizontal expansion of cities is no longer feasible and houses are constructed vertically on top of each other, we have aimed to revive the courtyard as the DNA of the Iranian house. By stacking these house-courtyards vertically in sections and facades, we focus on vertical expansion.

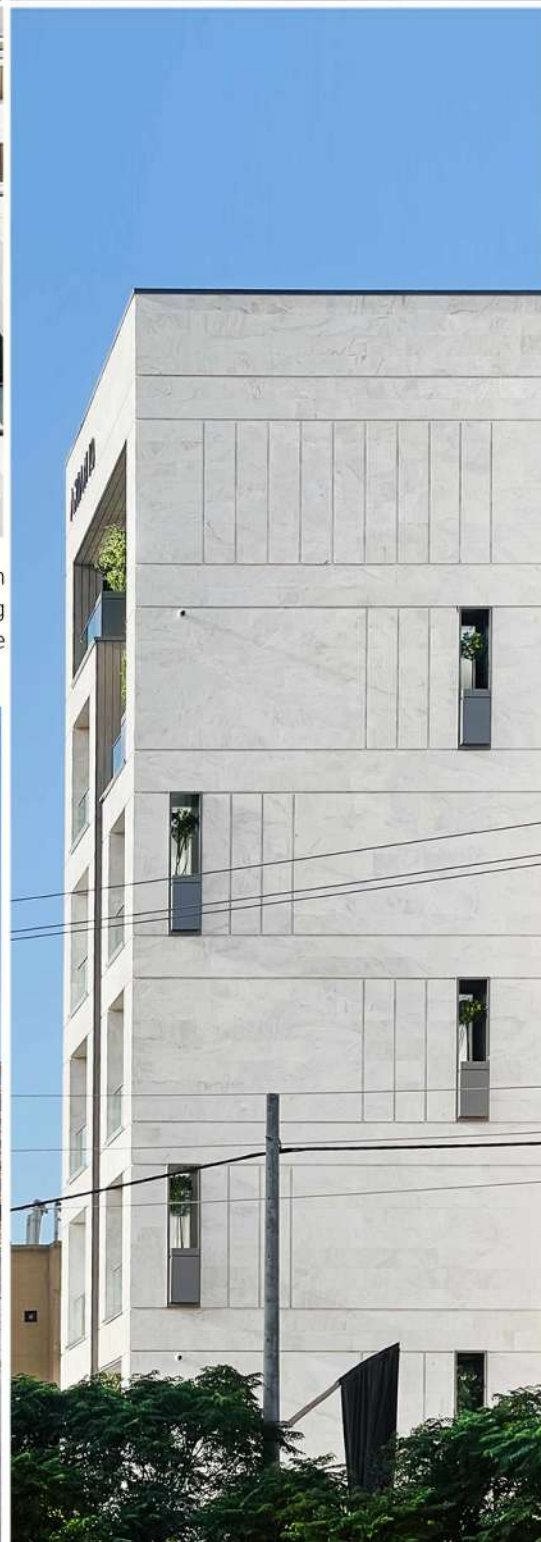
These green yards, with various shapes, scales, and proportions, penetrate the mass and create porosity, infusing a sense of life into the houses while enhancing the urban facade in a developing area suffering from a lack of green space. The integration of open and semi-open green spaces into the mass became the basis for the project's form design.

The urban regulation approved a 60% massing on the northern part of the site, with a required 2-meter setback for the backyard. However, following this massing regulation would have obstructed the desirable spatial and visual openness at the adjacent urban intersection. Furthermore, a significant portion of the building would have fallen under the shadow of the western neighbor. Due to the substantial height difference between the project's facade and the neighboring building, not only would the continuity of the urban facade be disrupted, but a portion of the neighboring side facade would also remain exposed and unfinished. To address these issues and create courtyards with varied functions, we reduced the massing in the northern and eastern sections of the site and increased it in the southern part, using this alternative massing approach as the basis for the design.





The central courtyards within the residential units on the top floor serve as the beating heart of the home. In addition to increasing the presence of greenery, trees, light, and sunlight, they become the focal point for family gatherings, once again gifting a piece of the sky to modern homes.



In designing the building's volume, we integrated open and green spaces into the mass, resulting in the creation of terraces, balconies, verandas, and green window alcoves of various scales. By using brick, inspired by traditional architecture, in combination with greenery within the inner layers of the structure, we further enhanced the infusion of life throughout the complex.

